



PREPAYMENT MONITORING REPORT

First Quarter 2021

Table of Contents

Table of Contents.....	i
Introduction	1
Alignment Requirements	2
Prepayment Performance Charts and Tables	3
Charts.....	4
Data Tables	20



Introduction

Fannie Mae and Freddie Mac began issuing the Uniform Mortgage-Backed Securities (UMBS) on June 3, 2019.

This quarterly report provides market participants additional transparency into a sample of the data FHFA receives and reviews on a monthly basis. The report focuses on alignment of prepayment rates, which continues to be important to the success of UMBS and to the efficiency and liquidity of the secondary mortgage market.

Ex post monitoring of prepayment rates is part of a broader effort to assure investors that cash flows from UMBS will be similar regardless of which Enterprise is the issuer. This report provides insight into how FHFA monitors the consistency of prepayment rates across cohorts of the Enterprises' TBA-eligible MBS,¹ where a cohort consists of those Enterprise TBA-eligible securities with the same coupon, maturity, and loan-origination year and total combined issuance across the Enterprises exceeds \$10

billion. A prepayment on a mortgage loan is the amount of principal paid in advance of the loan's scheduled payments. Full prepayment occurs when a borrower pays off the loan ahead of the scheduled maturity.

Background on UMBS:

Issuance of UMBS through their jointly developed Common Securitization Platform (CSP), fulfilled important elements of FHFA's *2014 Strategic Plan for the Conservatorships of Fannie Mae and Freddie Mac*.

Forward trading of UMBS began in the "To-Be-Announced" (TBA) market², on March 12, 2019 with first settlements of the UMBS trades on June 3, 2019. UMBS is issued without regard to which Enterprise is the issuer and has effectively merged the formerly separate UMBS markets. UMBS has broadened and enhanced liquidity in the secondary market for residential mortgages and reduced costs to taxpayers.³

¹ To avoid double counting, only first-level securitizations are included in the analysis. Second-level securitizations (Megs, Giants, and Supers) are excluded, with the exception of fastest quartile analyses and Table 2 (Quartile Report). For those exceptions, Freddie Mac multi-lender second-level securitizations traded as a single security are included and the related first-level securitizations are excluded to avoid double counting.

² The TBA market is a forward market for certain mortgage-backed securities, including those issued by the Enterprises.

³ See *An Update on the Structure of the Single Security*, May 2015, p.4



Alignment Requirements

On March 5, 2019, FHFA published the *Uniform Mortgage-Backed Security Final Rule* (Final Rule). The Final Rule codified FHFA thresholds with respect to differences between the prepayment rates of corresponding cohorts of each Enterprises' TBA-eligible securities. The Final Rule uses three-month CPRs rather than one-month CPRs, and, in addition to measuring alignment with respect to entire cohorts, the Final Rule looks to the fastest paying quartile of each cohort. Generally, for the fastest paying quartile of a cohort, the Enterprises must report to FHFA differences between Fannie Mae and Freddie Mac prepayment rates when the divergence between three-month CPRs exceeds five percentage points. For a divergence in three-month CPR in excess of eight percentage points, the Enterprises must provide a written report to FHFA on the causes of the divergence and submit a written remediation plan. In most instances, FHFA's UMBS Governance Committee reviews the reports and may recommend remedial actions.



Prepayment Performance Charts and Tables

FHFA uses the charts and data tables in this report to evaluate the alignment of loan attributes for newly issued Enterprise MBS and the prepayment performance of outstanding Enterprise MBS. These charts and tables have been abridged to improve readability by omitting coupons and years with lower volumes of outstanding securities. FHFA monitors similar information for both Enterprises, focusing primarily on coupons, maturities, and loan-origination years that have minimum combined outstanding principal balances in excess of \$10 billion and whose origination-years are not more than six calendar years prior to the current calendar year. Footnotes to the relevant charts and tables indicate cohorts that are below the \$10 billion threshold.

As mentioned previously, a prepayment on a mortgage loan is the amount of principal paid in advance of the loan's payment schedule. When a loan is prepaid, an MBS

investor receives the payment as principal. If the investor paid a premium for the security, the prepayment reduces the investor's yield. Therefore, investors in premium securities look for MBS that are likely to prepay slower than other MBS.

For further descriptions of how FHFA uses this information, see [*Update on the Single Security Initiative and Common Securitization Platform, December 2017*](#).

Prepayments between the Enterprises remain reasonably aligned quarter over quarter. Despite record low rates and refinance activity post UMBS implementation, the consistency in prepayment performance has contributed to continued efficiency and liquidity in the UMBS market. FHFA continues to monitor any cohort level pooling divergences between the Enterprises and its potential impact on prepay speeds.



Charts

Charts 1 and 2 illustrate alignment of entire cohorts, using one-month CPR. FHFA uses the one-month CPR in these charts to assess the alignment at the cohort level for past origination cycles and the general trend of alignment across loan-origination years on a more granular basis than the three-month CPR would afford.

Chart 1 compares one-month CPR for both Enterprises TBA-eligible 30-year securities for the current year and the prior six years.

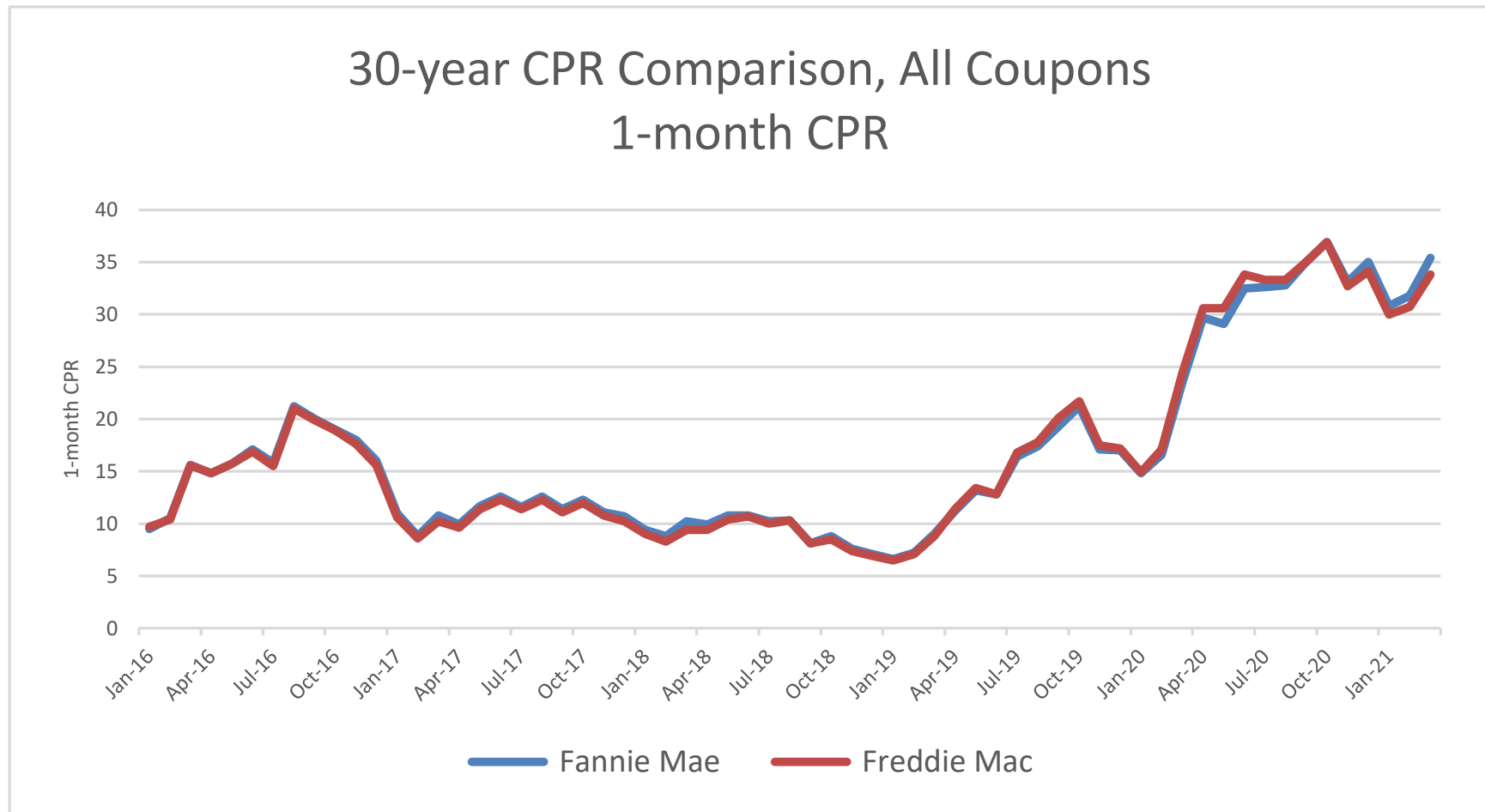
Chart 2 illustrates the comparison of pool loan-origination years for a given TBA-eligible MBS coupon. Chart 2 shows March 2021 one-month prepayment rates for entire cohorts each Enterprise's 30-year MBS for coupons with combined issuance volume outstanding in excess of \$10 billion (1.5%, 2%, 2.5%, 3%, 3.5%, 4%, 4.5%, and 5%) and the six loan-origination years prior to the current calendar year.

Charts 3a through 3i illustrate alignment with respect to the fastest paying quartiles of each cohort. FHFA uses these charts to assess alignment with respect to the fastest paying quartiles of cohorts of the Enterprises' TBA-eligible MBS on a historical basis. Chart 3a illustrates alignment in one-month prepayment rates across the Enterprises for recent coupons with issuance greater than \$10 billion. For each coupon in Chart 3a, the illustrated one-month prepayment rates are calculated across the fastest paying quartile at a given point in time. Charts 3b through 3i illustrate the degree of three-month prepayment rate alignment of the fastest paying quartile for each coupon-year cohort.

Chart 4 illustrates the spread between the weighted average loan rates (WACs) in mortgage pools to the coupon on the MBS backed by that pool for 30-year MBS issued by the Enterprises during the quarter. FHFA monitors this spread because differences in the spread between the Enterprises can lead to differences in prepayment rates as interest rates change. Securities with higher spreads are likely to experience faster prepayment rates as borrowers take advantage of opportunities to refinance due to their higher loan rates.

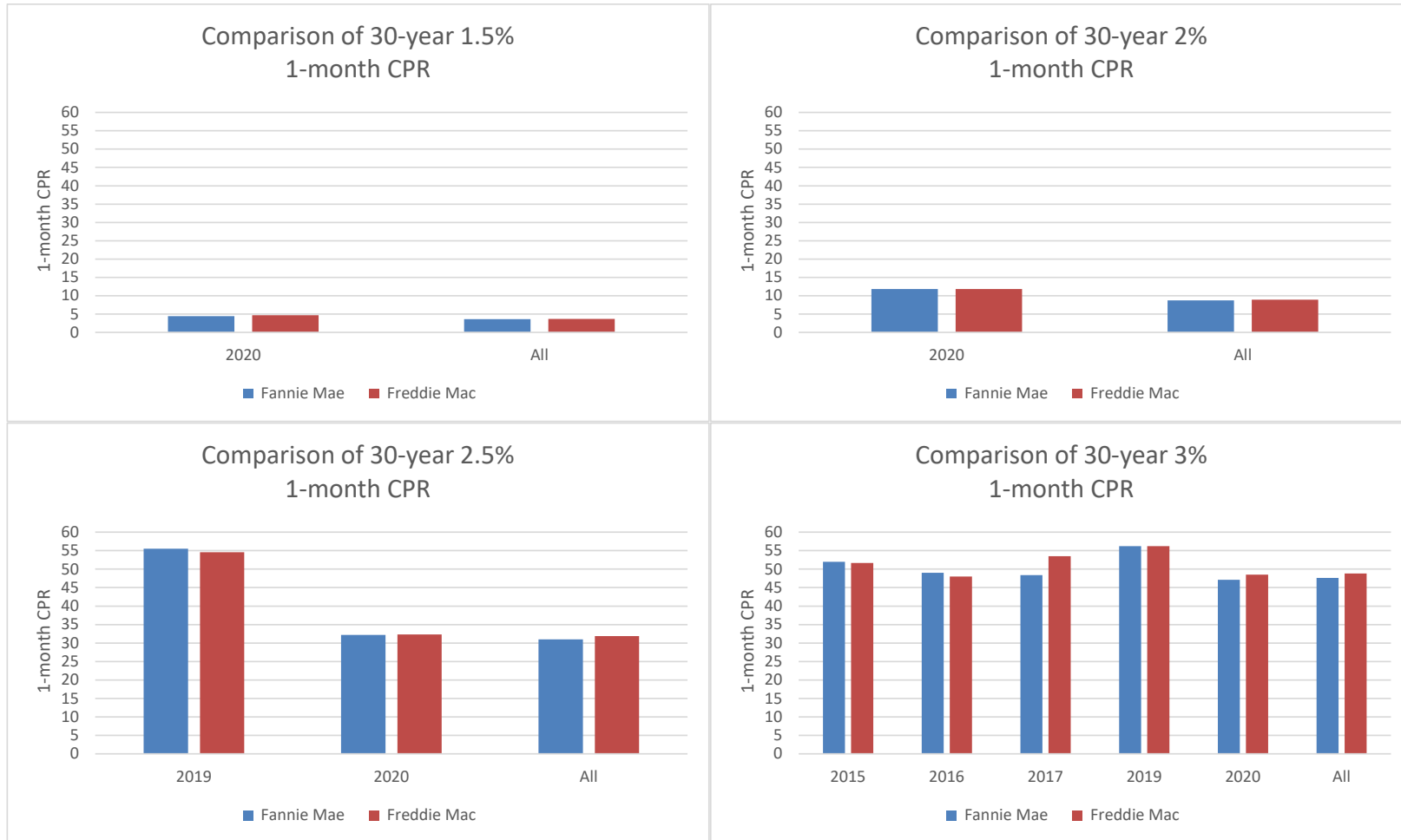


Chart 1: One-month CPR Comparison for 30-Year, for All TBA-Eligible MBS, All Coupons



Source: RiskSpan calculations from data available publicly as of April 2021. Calculations exclude new issuance with no one-month CPR information.

Chart 2: March 2021 One-month CPR on All 30-year, TBA-eligible MBS by Coupon and Loan-Origination Year*

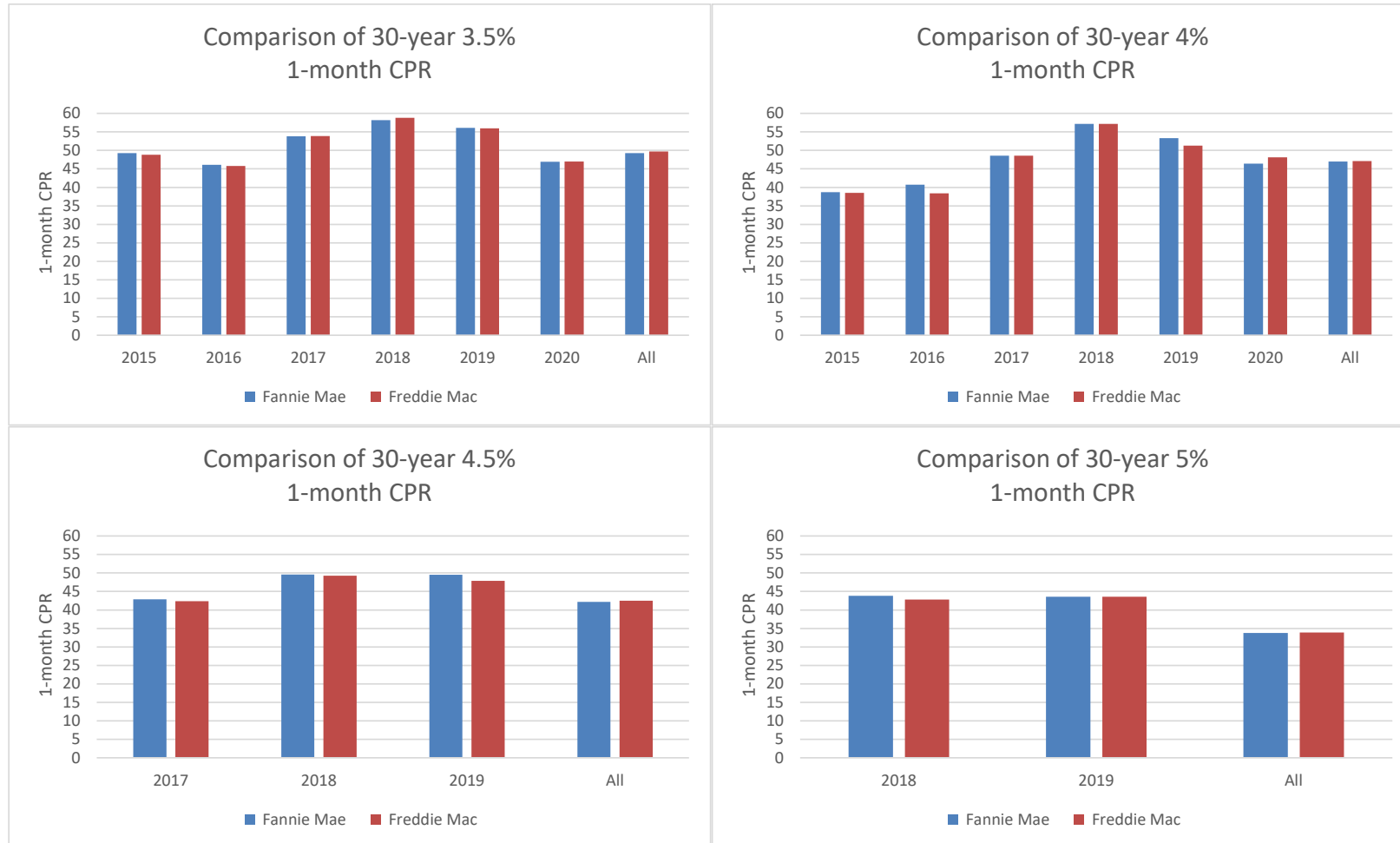


* The 1.5 percent coupon cohorts for 2015, 2016, 2017, 2018, and 2019; the 2 percent coupon cohorts for 2015, 2016, 2017, 2018, and 2019; the 2.5 percent coupon cohorts for 2015, 2016, 2017, and 2018; and the 3 percent coupon cohort for 2018, are omitted because each has a combined UPB below the \$10 billion threshold.

Source: RiskSpan calculations from data available publicly as of April 2021. Calculations exclude new issuance with no one-month CPR information.



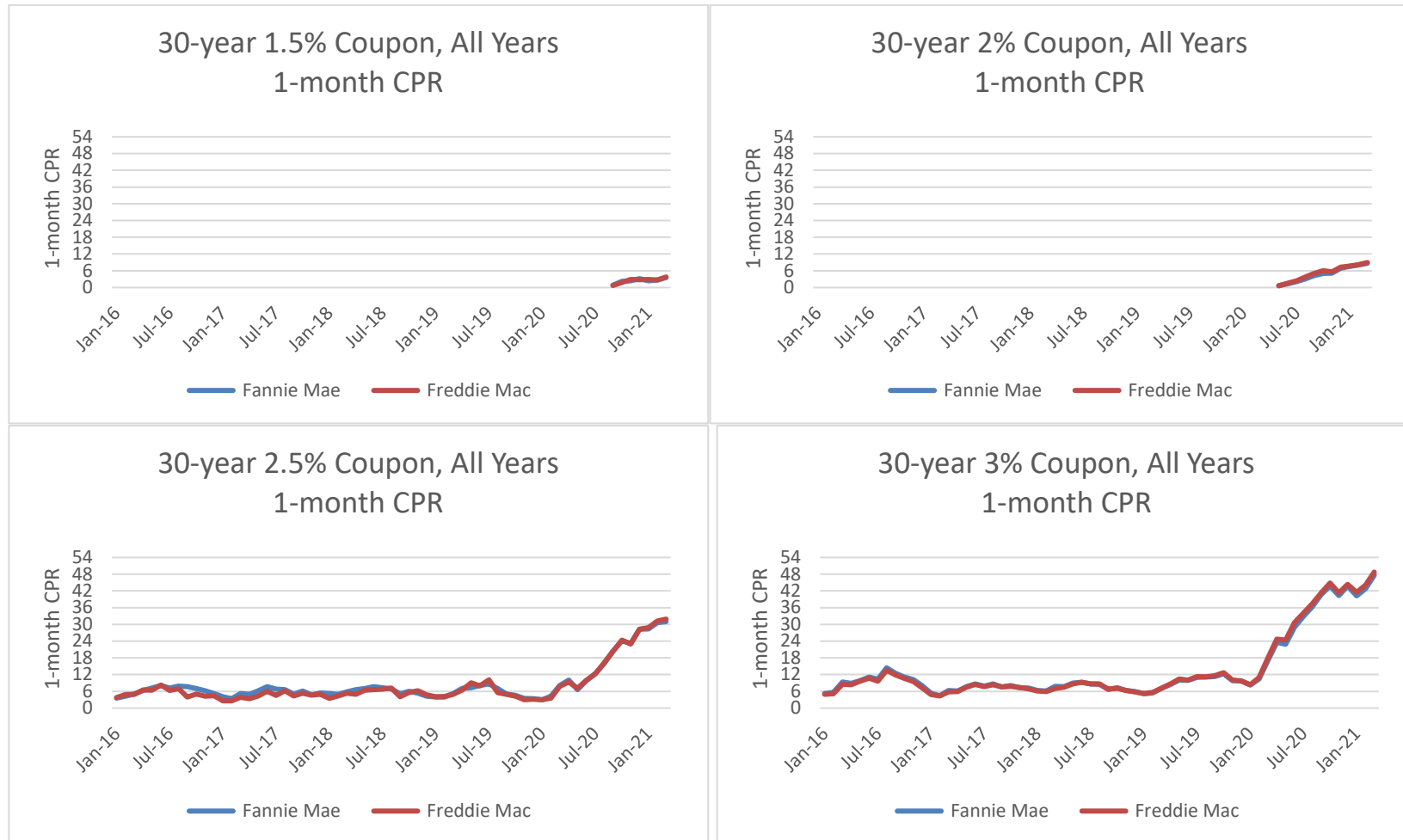
Chart 2: March 2021 One-month CPR on All 30-year, TBA-eligible MBS by Coupon and Loan-Origination Year*



* The 4.5 percent coupon cohorts for 2015, 2016, and 2020, and the 5 percent coupon cohorts for 2015, 2016, 2017, and 2020, are omitted because each has a combined UPB below the \$10 billion threshold.

Source: RiskSpan calculations from data available publicly as of April 2021. Calculations exclude new issuance with no one-month CPR information.

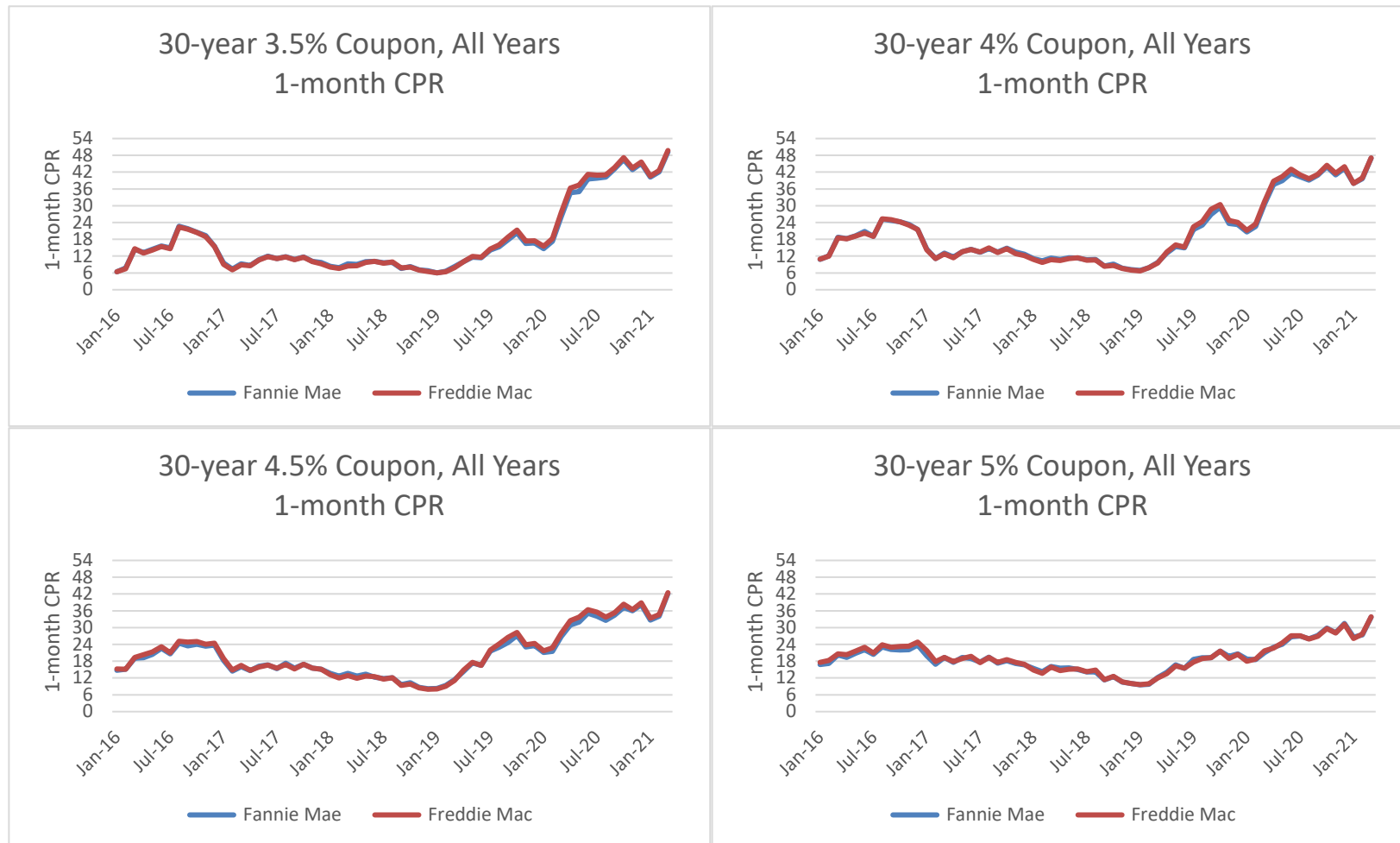
Chart 3a: One-month CPR on All 30-year, TBA-eligible MBS by Coupon*



* CPR data was omitted for dates where the combined UPB of the coupon cohort was below the \$10 billion threshold.

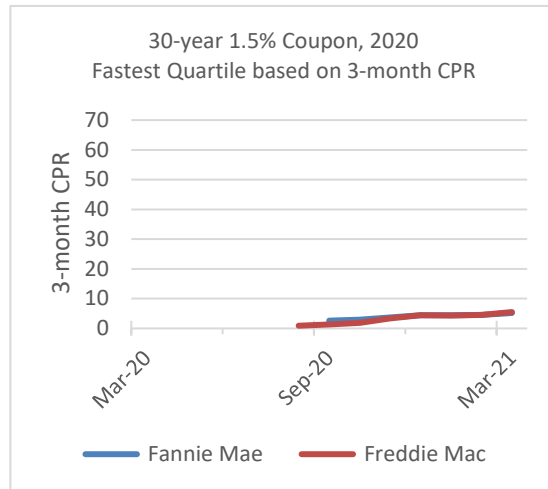
Source: RiskSpan calculations from data available publicly as of April 2021. Calculations exclude new issuance with no one-month CPR information.

Chart 3a: One-month CPR on All 30-year, TBA-eligible MBS by Coupon



Source: RiskSpan calculations from data available publicly as of April 2021. Calculations exclude new issuance with no one-month CPR information.

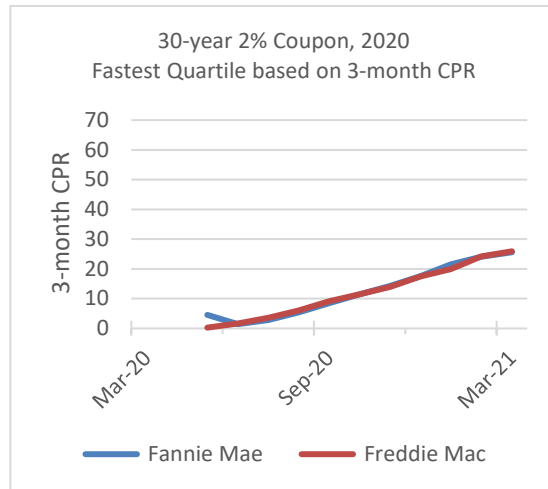
Chart 3b: Three-month CPR on 30-year Fastest Paying Quartiles, 1.50 Percent Coupon TBA-eligible MBS by Loan-Origination Year*



* The 2015, 2016, 2017, 2018, and 2019 cohorts are omitted because each has a combined UPB below the \$10 billion threshold.

Source: RiskSpan calculations from data available publicly as of April 2021. Calculations exclude new issuance with no three-month CPR information.

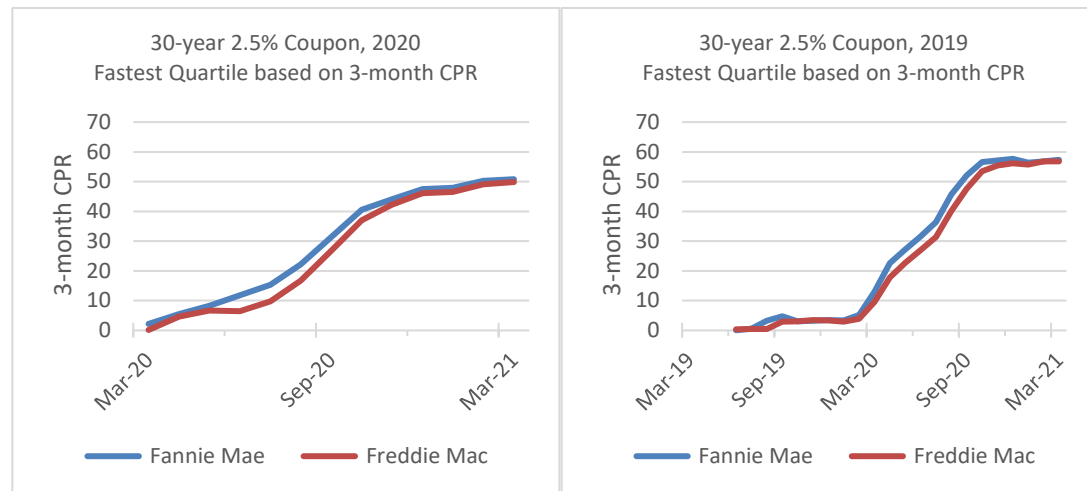
Chart 3c: Three-month CPR on 30-year Fastest Paying Quartiles, 2.00 Percent Coupon TBA-eligible MBS by Loan-Origination Year*



* The 2015, 2016, 2017, 2018, and 2019 cohorts are omitted because each has a combined UPB below the \$10 billion threshold.

Source: RiskSpan calculations from data available publicly as of April 2021. Calculations exclude new issuance with no three-month CPR information.

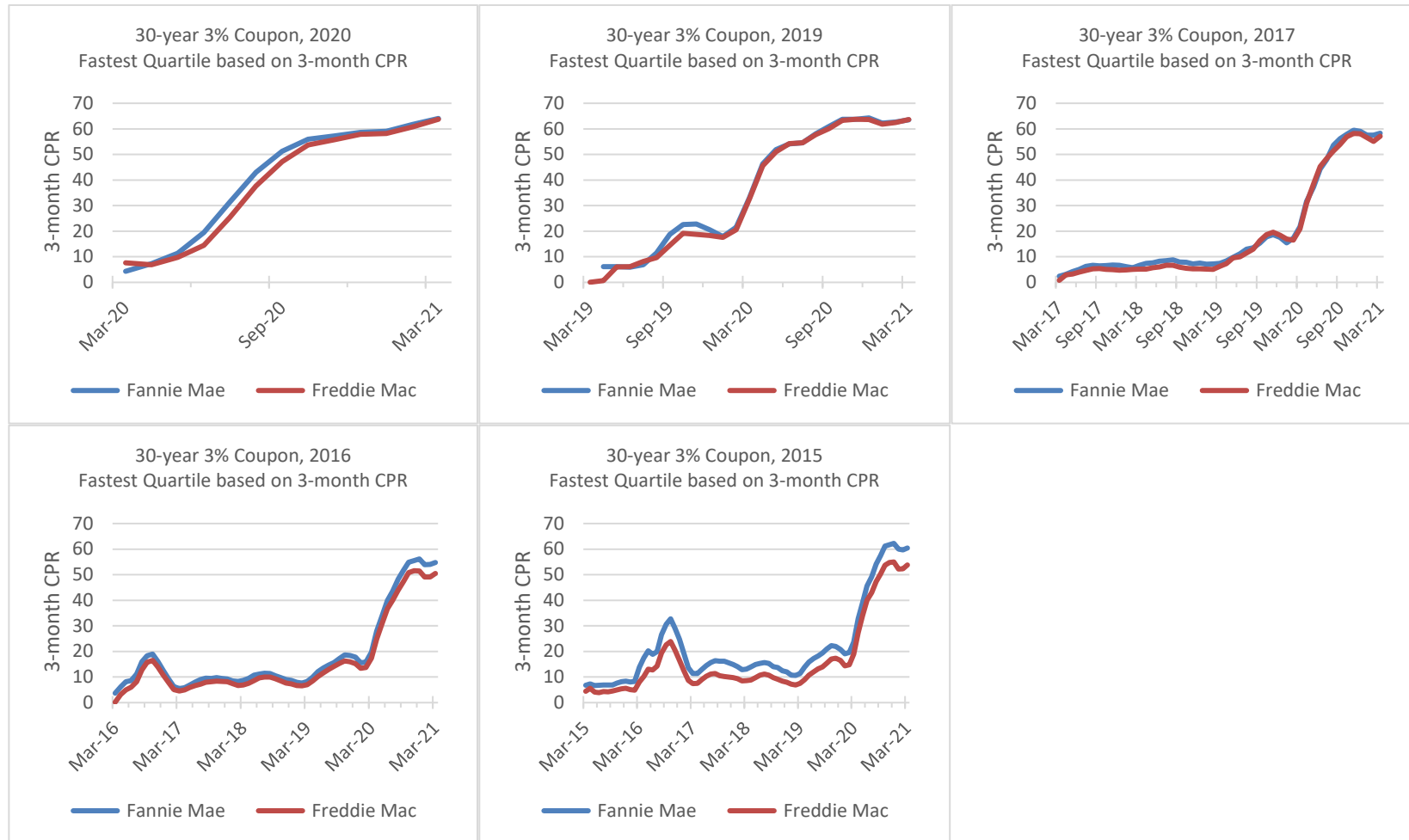
Chart 3d: Three-month CPR on 30-year Fastest Paying Quartiles, 2.50 Percent Coupon TBA-eligible MBS by Loan-Origination Year*



* The 2015, 2016, 2017, and 2018 cohorts are omitted because each has a combined UPB below the \$10 billion threshold.

Source: RiskSpan calculations from data available publicly as of April 2021. Calculations exclude new issuance with no three-month CPR information.

Chart 3e: Three-month CPR on 30-year Fastest Paying Quartiles, 3.00 Percent Coupon TBA-eligible MBS by Loan-Origination Year*

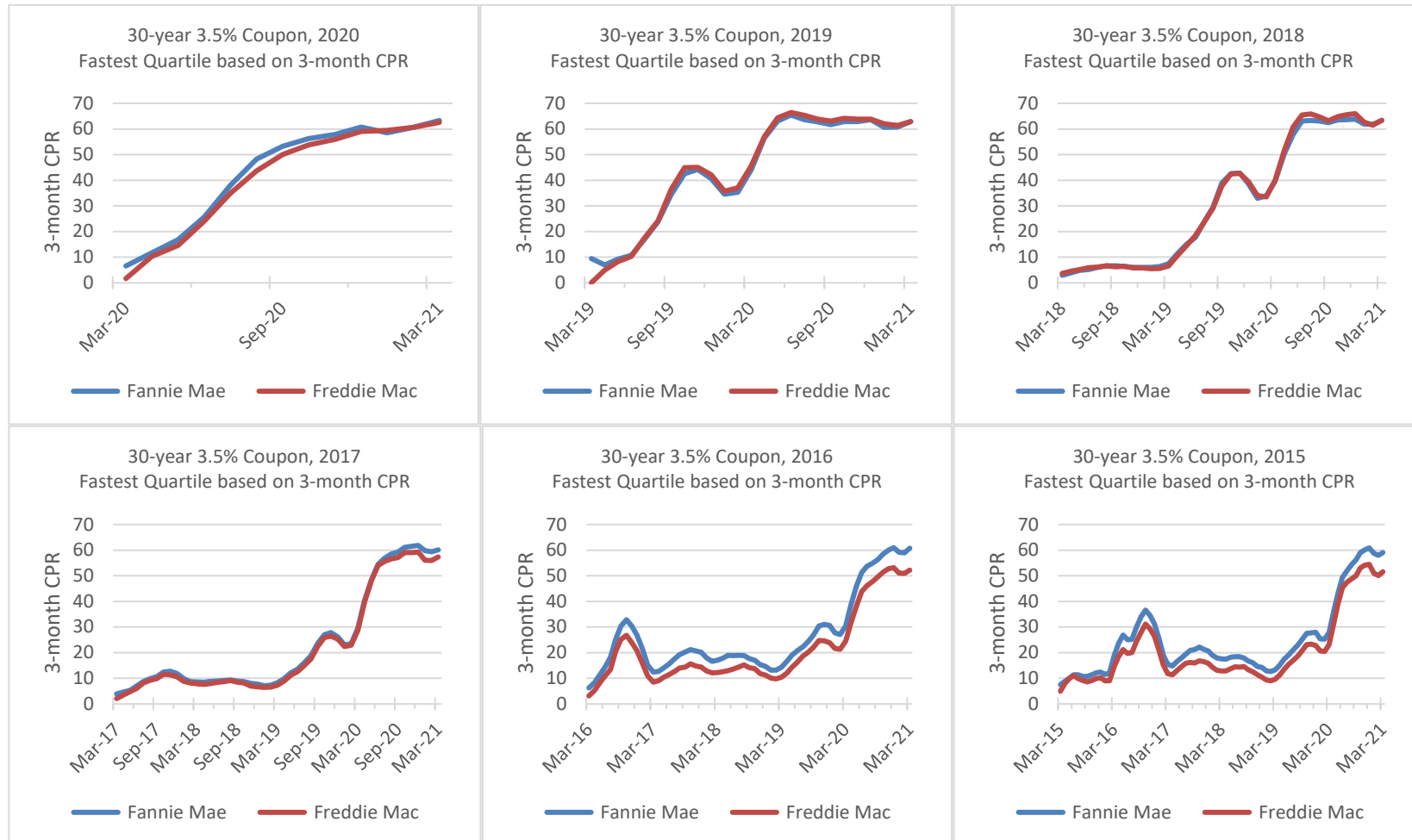


* The 2018 cohort is omitted because it has a combined UPB below the \$10 billion threshold.

Source: RiskSpan calculations from data available publicly as of April 2021. Calculations exclude new issuance with no three-month CPR information.

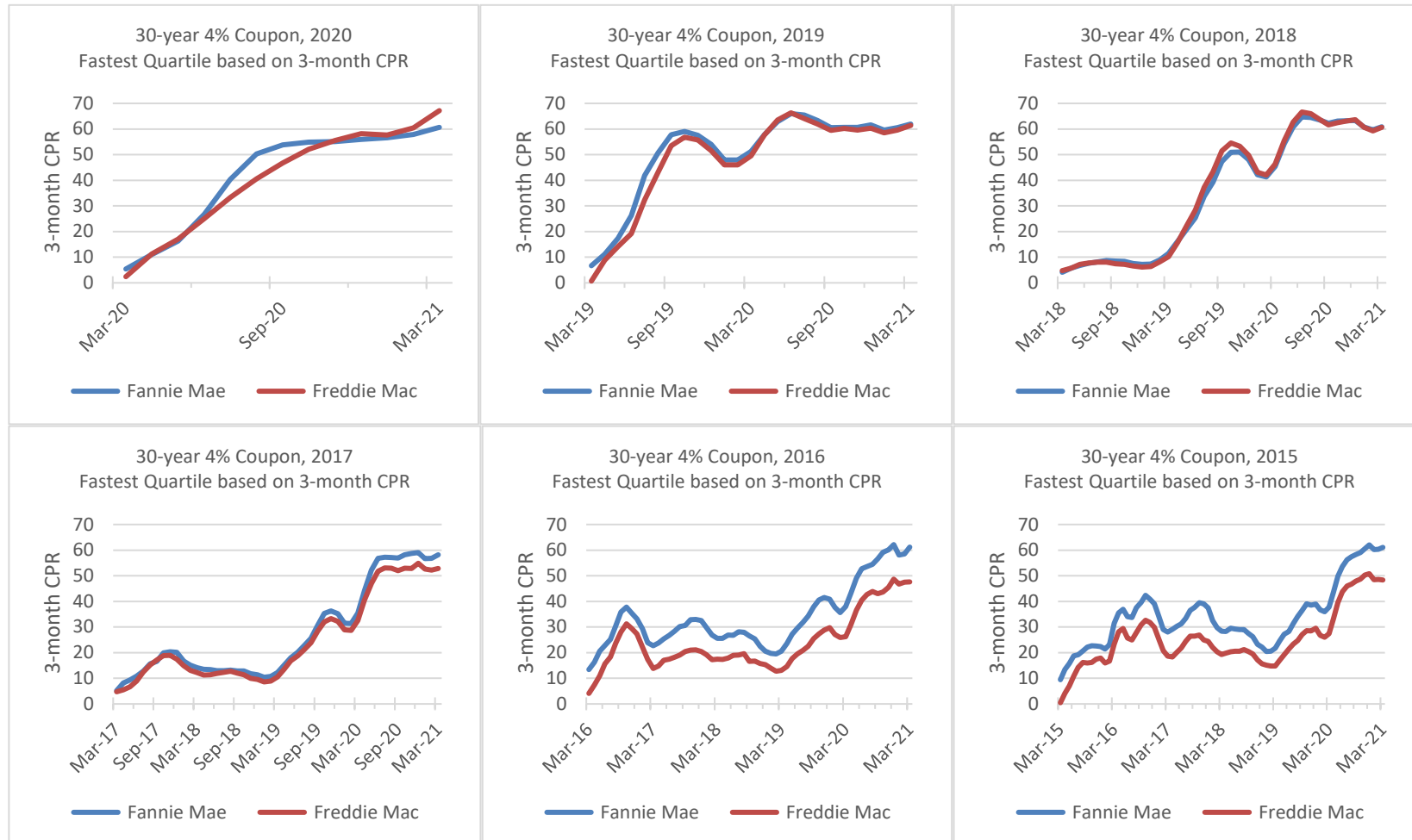


Chart 3f: Three-month CPR on 30-year Fastest Paying Quartiles, 3.50 Percent Coupon TBA-eligible MBS by Loan-Origination Year



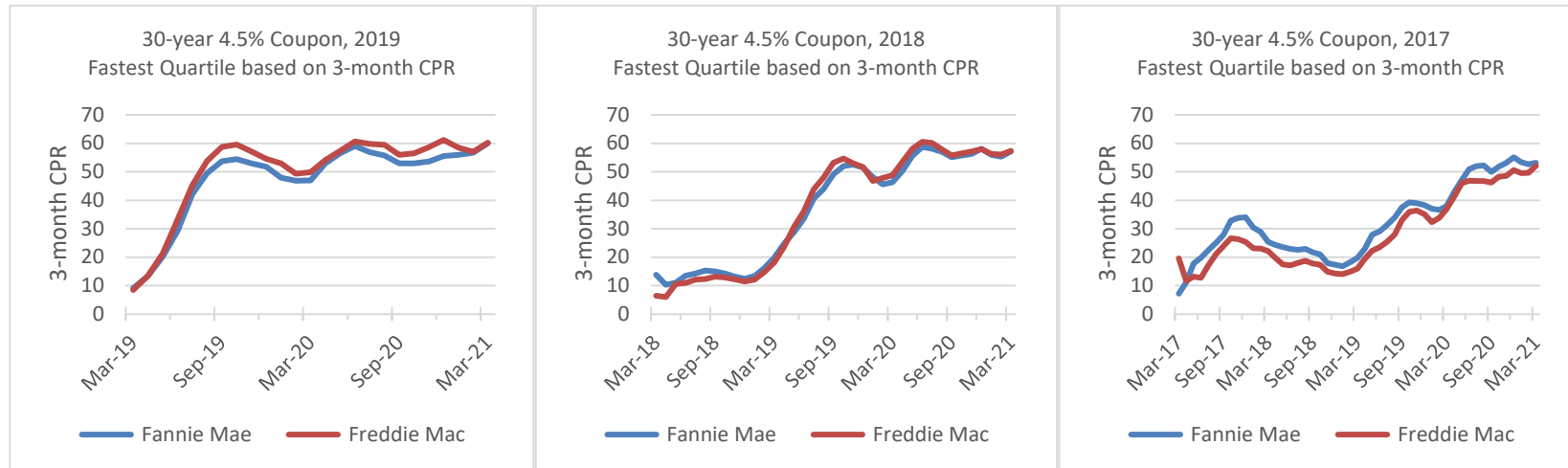
Source: RiskSpan calculations from data available publicly as of April 2021. Calculations exclude new issuance with no three-month CPR information.

Chart 3g: Three-month CPR on 30-year Fastest Paying Quartiles, 4.00 Percent Coupon TBA-eligible MBS by Loan-Origination Year



Source: RiskSpan calculations from data available publicly as of April 2021. Calculations exclude new issuance with no three-month CPR information.

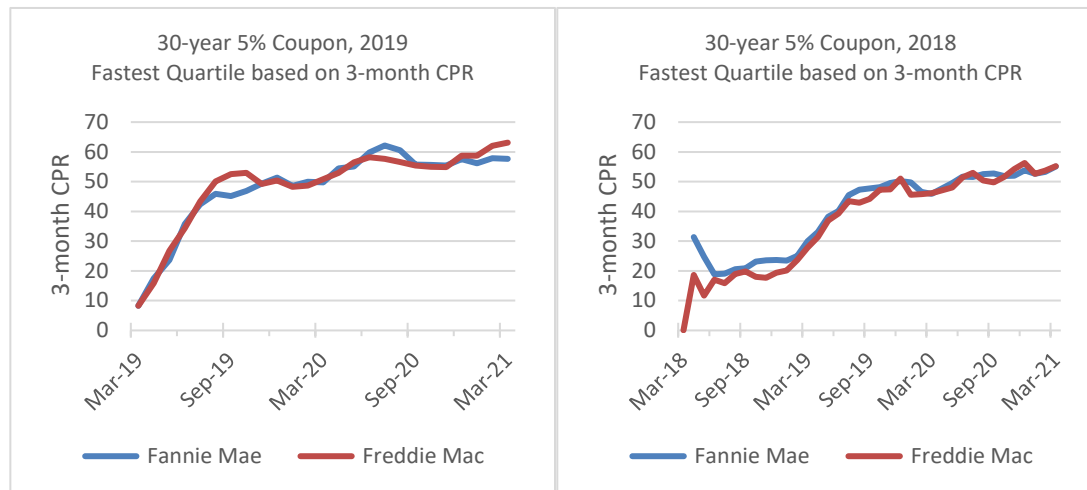
Chart 3h: Three-month CPR on 30-year Fastest Paying Quartiles, 4.50 Percent Coupon TBA-eligible MBS by Loan-Origination Year



* The 2015, 2016, and 2020 cohorts are omitted because each has a combined UPB below the \$10 billion threshold.

Source: RiskSpan calculations from data available publicly as of April 2021. Calculations exclude new issuance with no three-month CPR information.

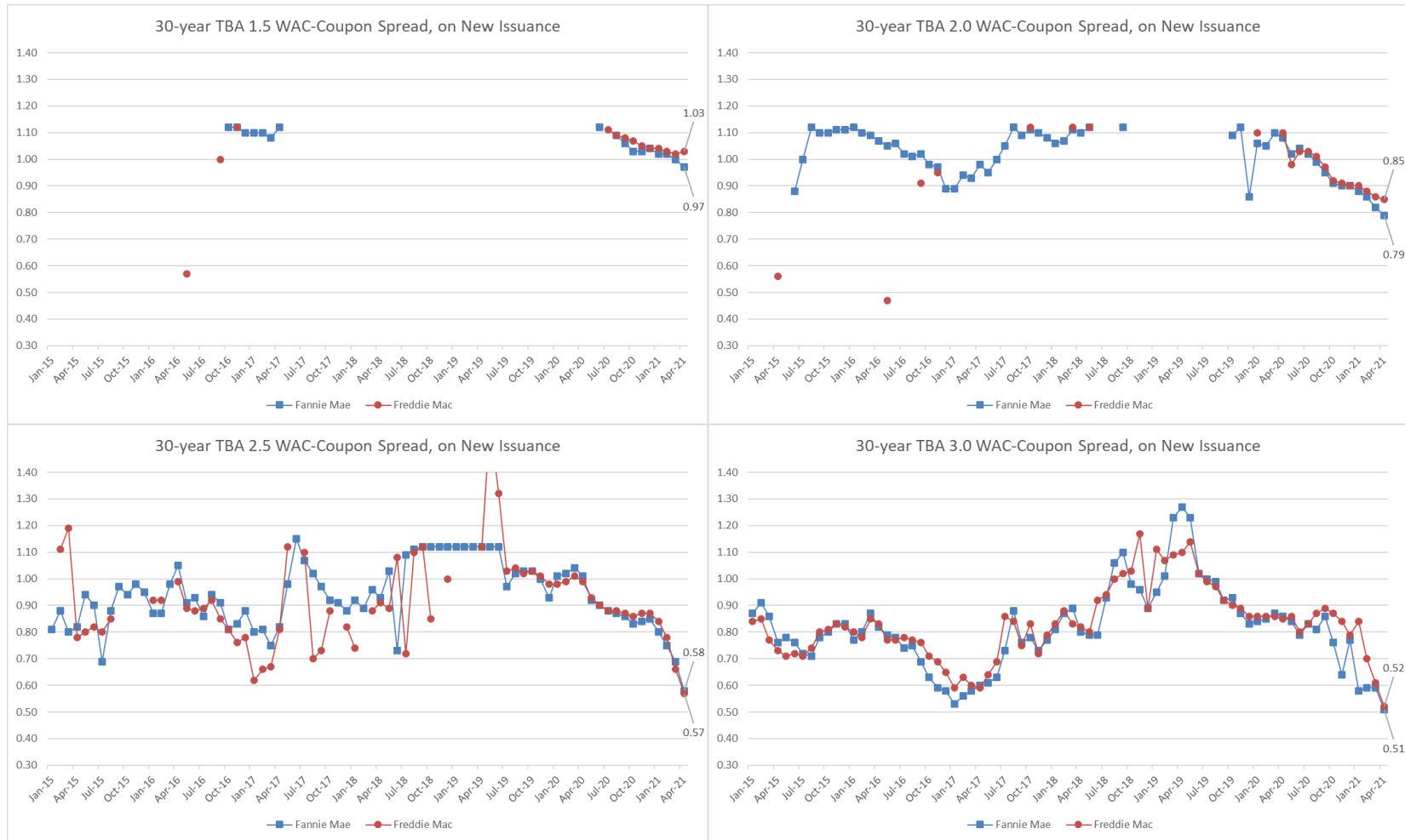
Chart 3i: Three-month CPR on 30-year Fastest Paying Quartiles, 5.00 Percent Coupon TBA-eligible MBS by Loan-Origination Year



* The 2015, 2016, 2017, and 2020 cohorts are omitted because each has a combined UPB below the \$10 billion threshold.

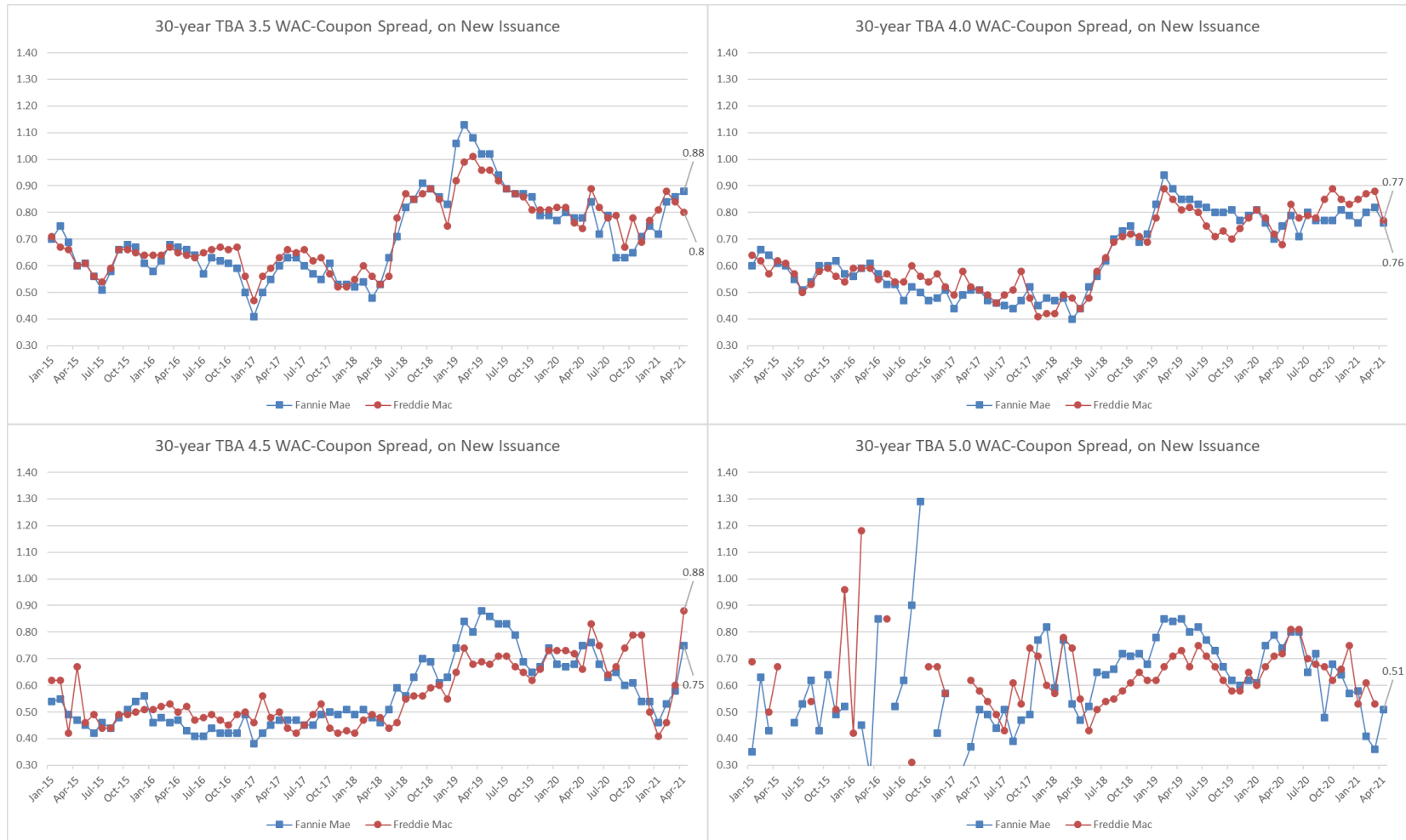
Source: RiskSpan calculations from data available publicly as of April 2021. Calculations exclude new issuance with no three-month CPR information.

Chart 4: Comparison of Weighted Average Loan Rate to Coupon Spread on New 30-year MBS Issuance



Source: RiskSpan calculations from data available publicly as of April 2021. Gaps in data may occur in some months due to a lack of MBS issuance.

Chart 4: Comparison of Weighted Average Loan Rate to Coupon Spread on New 30-year MBS Issuance



Source: RiskSpan calculations from data available publicly as of April 2021. Gaps in data may occur in some months due to a lack of MBS issuance.

Data Tables

FHFA uses Table 1, the Annual Vintage Report, to compare, at the cohort level, the Enterprises' three-month prepayment rates with cohort attributes, such as the weighted-average loan rate (WAC), the weighted-average loan maturity (WAM), the weighted-average loan age (WALA), and the unpaid principal balance (UPB). These comparisons provide context to understand better any significant differences in CPRs across the Enterprises.

Table 2, the Quartile Report, is used to compare the range of prepayment rates across all of the TBA-eligible MBS that have the same coupon issued by a given Enterprise. To do so, all of an Enterprise's TBA-eligible MBS pools outstanding in the month, excluding specified pools as defined in the glossary, and bearing the stated coupon are ranked by their three-month CPRs from fastest to slowest. The pools are then grouped into quartiles based on UPB. The Report presents the WALA, WAC, average loan size (ALS), and credit score (FICO) for each quartile. Quartile 1 in this table corresponds to the fastest paying quartile. Table 2 presents this information as of the end of the quarter.

Table 3, the Total Industry Issuance Report, provides a comparison, at the coupon cohort level, of the Enterprises' previous three months of issuance, with various key loan attributes that would affect the expectations of prepayments and delinquencies. FHFA uses this report to identify any differences in loan attributes that may cause a divergence in prepayment rates. The attributes that generally create faster prepayments, such as high credit score and low loan-to-value (LTV) ratio, also generally lower defaults. Analyzing new issuance data allows FHFA and the Enterprises to make timely adjustments to business practices to reduce potential misalignments in future prepayment rates.



Table 1: 30-year, Fastest Quartile of TBA-eligible MBS Vintage Report

Coupon	Year	Weighted Average Coupon (percent)		Weighted Average Maturity (months)		Weighted Average Loan Age (months)		Unpaid Principal Balance (\$ billions)		Three Month Conditional Prepayment Rates (percent)					
		FNM	FRE	FNM	FRE	FNM	FRE	FNM	FRE	March		February		January	
1.5	2020	2.54	2.56	350	350	6	6	10.6	13.5	5.10	5.50	4.50	4.50	4.40	4.60
2	2020	2.99	3.00	345	347	9	9	74.2	62.9	25.60	25.90	24.10	24.20	21.50	21.80
2.5	2019	3.52	3.51	338	337	17	18	7.6	6.3	57.30	56.80	56.80	56.80	56.40	55.70
	2020	3.44	3.43	342	343	12	12	61.4	41.1	50.80	49.80	50.30	49.10	47.90	46.60
3	2015	3.78	3.79	278	277	70	71	6.2	5.9	60.40	53.80	59.70	52.30	60.00	52.20
	2016	3.71	3.77	293	292	57	58	23.2	18.5	54.80	50.50	54.00	49.10	53.90	49.10
	2017	3.78	3.84	307	311	43	40	1.9	2	58.30	57.10	57.50	55.10	57.50	56.60
	2019	3.96	3.97	335	334	20	20	18.3	16.8	63.50	63.70	62.70	62.50	62.30	61.80
	2020	3.87	3.86	342	343	14	13	18.1	10	64.10	63.80	61.70	60.80	59.10	58.20
3.5	2015	4.11	4.13	280	281	69	68	11.7	9.2	59.00	51.60	58.00	50.10	58.70	50.90
	2016	4.14	4.17	292	289	59	61	6.3	4.7	60.80	52.20	58.90	50.90	59.20	51.00
	2017	4.07	4.10	305	307	45	44	13	10.4	60.10	57.30	59.40	56.00	59.80	56.10
	2018	4.20	4.31	317	319	35	33	4.9	3.5	63.30	63.40	61.80	61.50	61.90	62.70
	2019	4.50	4.45	331	331	23	23	9	6.7	62.90	62.90	60.80	61.40	60.70	62.00
	2020	4.38	4.38	342	342	14	13	2.3	1.2	63.30	62.60	60.60	60.70	58.50	59.60
4	2015	4.61	4.60	283	284	68	68	1.4	1.1	61.10	48.40	60.30	48.60	60.20	48.50
	2016	4.57	4.58	294	295	58	58	1	1	61.20	47.60	58.50	47.50	58.10	46.70
	2017	4.44	4.46	306	309	46	44	6.7	4.8	58.20	52.80	56.80	52.20	56.70	52.60
	2018	4.67	4.70	321	322	32	31	11.1	7.3	60.90	60.70	59.70	59.30	60.80	60.60
	2019	4.94	4.86	328	329	26	25	4.3	2.5	61.90	61.40	60.50	59.60	59.60	58.50
	2020	4.84	4.73	343	343	14	12	0.9	0.4	60.60	67.20	57.90	60.40	56.60	57.70
4.5	2017	5.03	4.96	310	309	44	45	1	0.8	53.20	52.10	52.60	49.60	53.40	49.50
	2018	5.20	5.18	324	324	30	30	3.4	2.7	57.10	57.30	55.30	56.10	56.00	56.30
	2019	5.37	5.32	330	331	25	24	1.4	0.8	60.00	60.20	56.70	57.00	55.90	58.50
5	2018	5.74	5.70	324	324	31	31	0.6	0.4	55.10	55.20	53.30	53.70	52.60	52.60
	2019	5.76	5.71	334	333	20	22	0.4	0.3	57.70	63.10	57.90	62.00	56.20	58.70

Source: RiskSpan calculations from data available publicly as of April 2021. Calculations exclude new issuance with no three-month CPR information, and exclude specified pools (see appendix for definition). The balances displayed on the table are beginning-of-quarter balances for the population included in the fastest quartile for each cohort.

Table 2: 30-year TBA-eligible, less Specified Pools, Cohort Quartile Report for Qualifying Cohorts*

30-year, 1.5	Quartile 1		Quartile 2		Quartile 3		Quartile 4	
Fannie Mae	4.8		3.5		2.7		1.8	
Freddie Mac	5.3		3.8		3.0		0.4	
Difference	-0.5		-0.3		-0.3		1.4	
Attributes	FNM	FRE	FNM	FRE	FNM	FRE	FNM	FRE
WALA	6	6	5	5	4	4	3	4
WAC	2.53	2.55	2.53	2.54	2.52	2.54	2.52	2.53
ALS	363	362	368	368	373	366	381	375
FICO	774	774	775	774	775	773	775	773

30-year, 2.5	Quartile 1		Quartile 2		Quartile 3		Quartile 4	
Fannie Mae	54.1		44.7		36.3		12.0	
Freddie Mac	53.4		44.6		36.2		14.1	
Difference	0.7		0.1		0.1		-2.1	
Attributes	FNM	FRE	FNM	FRE	FNM	FRE	FNM	FRE
WALA	15	15	11	13	10	10	7	7
WAC	3.47	3.46	3.39	3.39	3.37	3.37	3.36	3.37
ALS	331	325	335	330	340	340	298	300
FICO	764	765	762	763	761	761	751	753

30-year, 2.0	Quartile 1		Quartile 2		Quartile 3		Quartile 4	
Fannie Mae	24.6		9.1		4.2		2.4	
Freddie Mac	24.5		9.2		4.0		1.3	
Difference	0.1		-0.1		0.2		1.1	
Attributes	FNM	FRE	FNM	FRE	FNM	FRE	FNM	FRE
WALA	9	9	7	7	5	5	4	4
WAC	2.99	2.99	2.91	2.92	2.90	2.90	2.87	2.89
ALS	350	362	351	354	334	347	329	334
FICO	772	771	769	770	766	766	765	764

30-year, 3.0	Quartile 1		Quartile 2		Quartile 3		Quartile 4	
Fannie Mae	63.6		56.1		48.2		36.8	
Freddie Mac	62.6		54.9		48.0		40.1	
Difference	1.0		1.2		0.2		-3.3	
Attributes	FNM	FRE	FNM	FRE	FNM	FRE	FNM	FRE
WALA	20	18	28	33	52	55	41	42
WAC	3.89	3.90	3.84	3.85	3.69	3.74	3.72	3.74
ALS	323	330	307	301	288	289	269	271
FICO	755	756	753	755	760	757	754	755

* FHFA omits the average prepayment speeds of pools with age less than 3 months and coupon cohorts with a combined UPB less than \$10 billion.

* Qualifying Cohorts are defined as cohorts of TBA-eligible pools, excluding Specified Pools, issued during the most recent six origination years, including the current origination year.

* The weighted-average statistics that are published in this table use beginning-of-quarter balances and end-of-quarter WAC, WALA, and FICO. ALS statistics represent a simple average of all loans in the cohorts.

Table 2: 30-year TBA-eligible, less Specified Pools, Cohort Quartile Report for Qualifying Cohorts*

30-year, 3.5	Quartile 1		Quartile 2		Quartile 3		Quartile 4	
Fannie Mae	62.3		55.4		51.2		38.5	
Freddie Mac	60.4		54.6		49.0		42.8	
Difference	1.9		0.8		2.2		-4.3	
Attributes	FNM	FRE	FNM	FRE	FNM	FRE	FNM	FRE
WALA	33	29	42	41	52	60	56	56
WAC	4.32	4.33	4.12	4.12	4.09	4.15	4.15	4.13
ALS	296	302	293	295	281	273	259	269
FICO	745	747	753	752	750	750	745	744

30-year, 4.5	Quartile 1		Quartile 2		Quartile 3		Quartile 4	
Fannie Mae	58.8		51.1		47.6		35.5	
Freddie Mac	57.9		49.6		45.9		36.0	
Difference	0.9		1.5		1.7		-0.5	
Attributes	FNM	FRE	FNM	FRE	FNM	FRE	FNM	FRE
WALA	29	29	30	35	33	34	36	35
WAC	5.26	5.21	5.26	5.07	5.16	5.16	5.12	5.10
ALS	287	291	293	289	288	288	267	270
FICO	712	720	704	716	709	713	703	710

30-year, 4.0	Quartile 1		Quartile 2		Quartile 3		Quartile 4	
Fannie Mae	61.1		56.3		51.8		39.1	
Freddie Mac	60.1		54.7		49.8		40.6	
Difference	1.0		1.6		2.0		-1.5	
Attributes	FNM	FRE	FNM	FRE	FNM	FRE	FNM	FRE
WALA	34	30	31	33	39	41	43	49
WAC	4.70	4.74	4.72	4.68	4.56	4.57	4.64	4.60
ALS	289	296	295	297	288	291	262	270
FICO	742	743	737	741	731	731	724	725

30-year, 5.0	Quartile 1		Quartile 2		Quartile 3		Quartile 4	
Fannie Mae	57.8		47.4		42.6		28.3	
Freddie Mac	60.5		48.0		42.0		25.6	
Difference	-2.7		-0.6		0.6		2.7	
Attributes	FNM	FRE	FNM	FRE	FNM	FRE	FNM	FRE
WALA	27	23	30	27	28	30	28	29
WAC	5.74	5.71	5.77	5.74	5.79	5.70	5.76	5.69
ALS	266	285	270	267	276	261	257	257
FICO	682	695	685	699	681	698	685	696

* FHFA omits the average prepayment speeds of pools with age less than 3 months and coupon cohorts with a combined UPB less than \$10 billion.

* Qualifying Cohorts are defined as cohorts of TBA-eligible pools, excluding Specified Pools, issued during the most recent six origination years, including the current origination year.

* The weighted-average statistics that are published in this table use beginning-of-quarter balances and end-of-quarter WAC, WALA, and FICO. ALS statistics represent a simple average of all loans in the cohorts.

Table 3: Q1 2021 30-year, TBA-eligible MBS Total Industry Quarterly Issuance Report*

	1.00%	1.50%		2.00%		2.50%		3.00%		3.50%		4.00%		4.50%		5.00%		5.50%	All Loans	
	FNM	FNM	FRE	FNM	FRE	FNM	FRE	FNM	FRE	FNM	FRE	FNM	FRE	FNM	FRE	FNM	FRE	FNM	FNM	FRE
Loan Count	87	96,296	146,478	661,892	531,536	240,742	175,474	52,832	19,755	4,283	2,554	2,662	1,599	585	389	76	15	18	1,059,473	877,800
UPB (billions)	0.00	36.11	54.14	201.55	167.97	55.51	37.15	11.05	3.80	0.81	0.43	0.47	0.32	0.09	0.05	0.02	0.00	0.00	305.65	263.88
% of Production Volume	0.00	11.80	20.50	66.00	63.60	18.20	14.10	3.60	1.40	0.30	0.20	0.20	0.10	0.00	0.00	0.00	0.00	0.00	100.00	100.00
WA Note Rate (%)	2.00	2.50	2.53	2.83	2.86	3.16	3.16	3.55	3.58	4.36	4.36	4.80	4.86	5.08	5.20	5.41	5.58	5.96	2.88	2.85
WA Loan Age (mos.)	2	1	1	1	1	1	1	1	2	3	2	3	2	7	3	5	2	34	1	1
WAFICO	775	774	771	761	758	745	745	729	737	714	728	710	720	703	709	685	669	707	758	758
WALTV	0.63	0.68	0.7	0.71	0.72	0.72	0.71	0.72	0.7	0.76	0.73	0.77	0.74	0.76	0.77	0.77	0.79	0.83	0.71	0.72
%FICO<680	1.00	1.00	1.00	3.00	4.00	10.00	10.00	22.00	15.00	32.00	23.00	35.00	28.00	38.00	36.00	55.00	84.00	38.00	5.00	4.00
%FICO>740	88.00	86.00	84.00	72.00	69.00	57.00	57.00	46.00	52.00	35.00	45.00	33.00	39.00	30.00	30.00	16.00	12.00	32.00	70.00	70.00
%LTV>80	6.00	19.00	23.00	24.00	23.00	22.00	17.00	17.00	10.00	23.00	11.00	20.00	11.00	17.00	15.00	15.00	12.00	45.00	23.00	22.00
%FICO<680 & LTV>80	0.00	0.00	0.00	1.00	1.00	3.00	2.00	7.00	3.00	10.00	4.00	8.00	4.00	6.00	6.00	11.00	0.00	15.00	1.00	1.00
%DTI>40	18.00	24.00	24.00	30.00	29.00	35.00	32.00	37.00	37.00	39.00	38.00	41.00	40.00	39.00	43.00	45.00	58.00	45.00	31.00	29.00
%Purchase	15.00	33.00	36.00	31.00	28.00	29.00	24.00	33.00	26.00	45.00	40.00	45.00	46.00	45.00	54.00	35.00	38.00	51.00	31.00	29.00
%Rate/Term	65.00	58.00	55.00	52.00	52.00	42.00	44.00	31.00	34.00	15.00	18.00	11.00	8.00	13.00	2.00	21.00	0.00	9.00	50.00	51.00
%Cash out	20.00	10.00	9.00	18.00	20.00	29.00	32.00	36.00	39.00	40.00	42.00	44.00	47.00	42.00	43.00	44.00	62.00	40.00	20.00	19.00
%Owner Occupied	96.00	96.00	96.00	93.00	93.00	79.00	81.00	55.00	51.00	61.00	43.00	52.00	34.00	58.00	40.00	76.00	50.00	80.00	89.00	91.00
%Second Home	4.00	4.00	4.00	4.00	4.00	3.00	3.00	2.00	1.00	2.00	1.00	2.00	1.00	3.00	1.00	0.00	0.00	0.00	4.00	4.00
%Investor	0.00	0.00	0.00	3.00	3.00	18.00	15.00	44.00	47.00	37.00	55.00	45.00	65.00	39.00	59.00	24.00	50.00	20.00	7.00	5.00

* Numbers in the table represent end of quarter, not at-securitization, values. UPB = unpaid principal balance; WA = weighted average; WAC = weighted average coupon; WALA = weighted average loan age; LTV = loan-to-value ratio; DTI = debt-to-income ratio.

Source: RiskSpan calculations from data available publicly as of April 2021.

Glossary

Average loan size (ALS) refers to the average dollar amount of the loans as stated on the notes at the time the loans were originated or modified.

Cohort refers to those Enterprise TBA-eligible securities with the same coupon, maturity, and loan-origination year where the combined unpaid principal balance of such securities exceeds \$10 billion. The loan-origination year is calculated as the value-weighted average of the origination years of the mortgages collateralizing a security.

Conditional prepayment rate (CPR), also known as the constant prepayment rate, measures prepayments as a percentage of the current outstanding principal balance of the pool of loans backing a mortgage-backed security or cohort of those securities. The CPR is expressed as a compound annual rate.

Debt-to-income (DTI) ratio is the ratio obtained by dividing the total monthly debt expense by the total monthly income of the borrower at the time the loan was originated or modified.

Fastest paying quartile of a cohort means the quartile of a cohort that has the fastest prepayment speeds as measured by the three-month CPR. The quartiles shall be determined by ranking outstanding TBA-eligible securities with the same coupon, maturity, and loan-origination year by the three-month CPR, excluding specified pools, and dividing each cohort into four parts such that the total unpaid principal balance of the pools included in each part is equal.

FICO refers to a credit score produced by FICO and used in the mortgage underwriting process.

Loan-to-value (LTV) ratio is the ratio, expressed as a percentage, obtained by dividing the amount of the loan at origination by the value of the property.

Specified pools for the purpose of this report, are those pools with one or more of the following characteristics at issuance: a maximum loan size of \$200,000, a loan-to-value ratio at the time of loan origination of greater than 80 percent, a FICO score



of less than 700, where all loans finance investor-owned properties, or where all loans finance properties in the states of New York or Texas or the Commonwealth of Puerto Rico.

To-be-announced (TBA) market is a forward market for certain mortgage-backed securities, including those issued by the Enterprises.

Uniform Mortgage-Backed Security (UMBS) is the new single, common mortgage-backed security that the Enterprises issue, which replaced their previous offerings of TBA-eligible single class, fixed-rate mortgage backed securities.

Unpaid principal balance (UPB) is the portion of a loan that the borrower has not yet paid back to the lender.

Weighted average coupon (WAC) refers to the average gross interest rates owed on the mortgages underlying the security weighted by the percentage of the security's unpaid principal balance that each mortgage represents.

Weighted average loan age (WALA) refers to the average number of months since the date of origination of mortgages underlying the security weighted by the percentage of the security's unpaid principal balance that each mortgage represents.

Weighted average maturity (WAM) refers to the average number of months remaining until the final payment is due on mortgages underlying the security weighted by the percentage of the security's unpaid principal balance that each mortgage represents.

